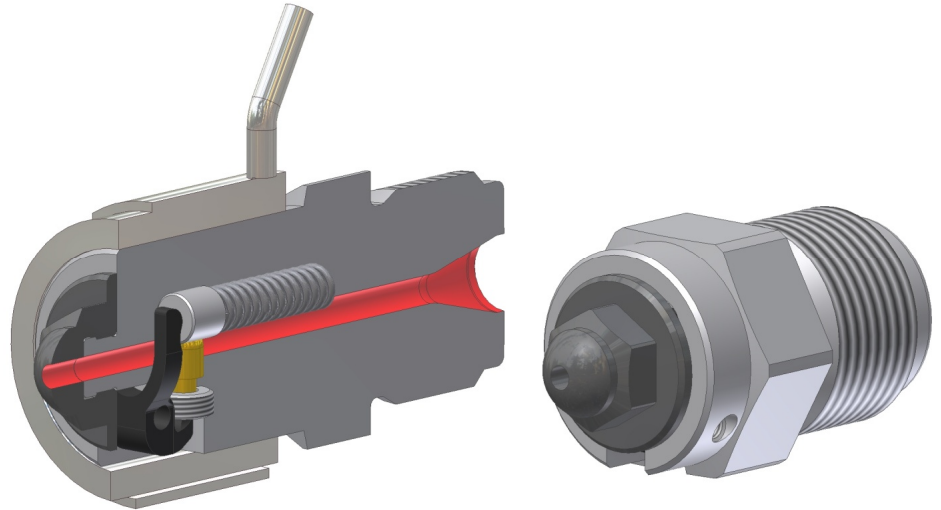


**Machine nozzle with bolt shut-off type MB**

Spring operated

**Standard model****Short model**

Without heating system - heat conduction from cylinder

Our Micro bolt shut-off nozzle is designed for the smallest screw units. The shut-off mechanism functions by spring force and is injection pressure dependant.

**Prevents**

- Material leakage while dosing with a retracted injection unit
- Material leakage while vertically injecting

**Productivity factors**

- Shorter cycle times → increase in productivity
- Increased process reliability and repeatability
- Usability with increased back pressure → improved homogenization
- Retrofitting

Dimension sheet for enquiry		or order	Machine bolt shut-off nozzle type MB, spring operated
-----------------------------	--	----------	---

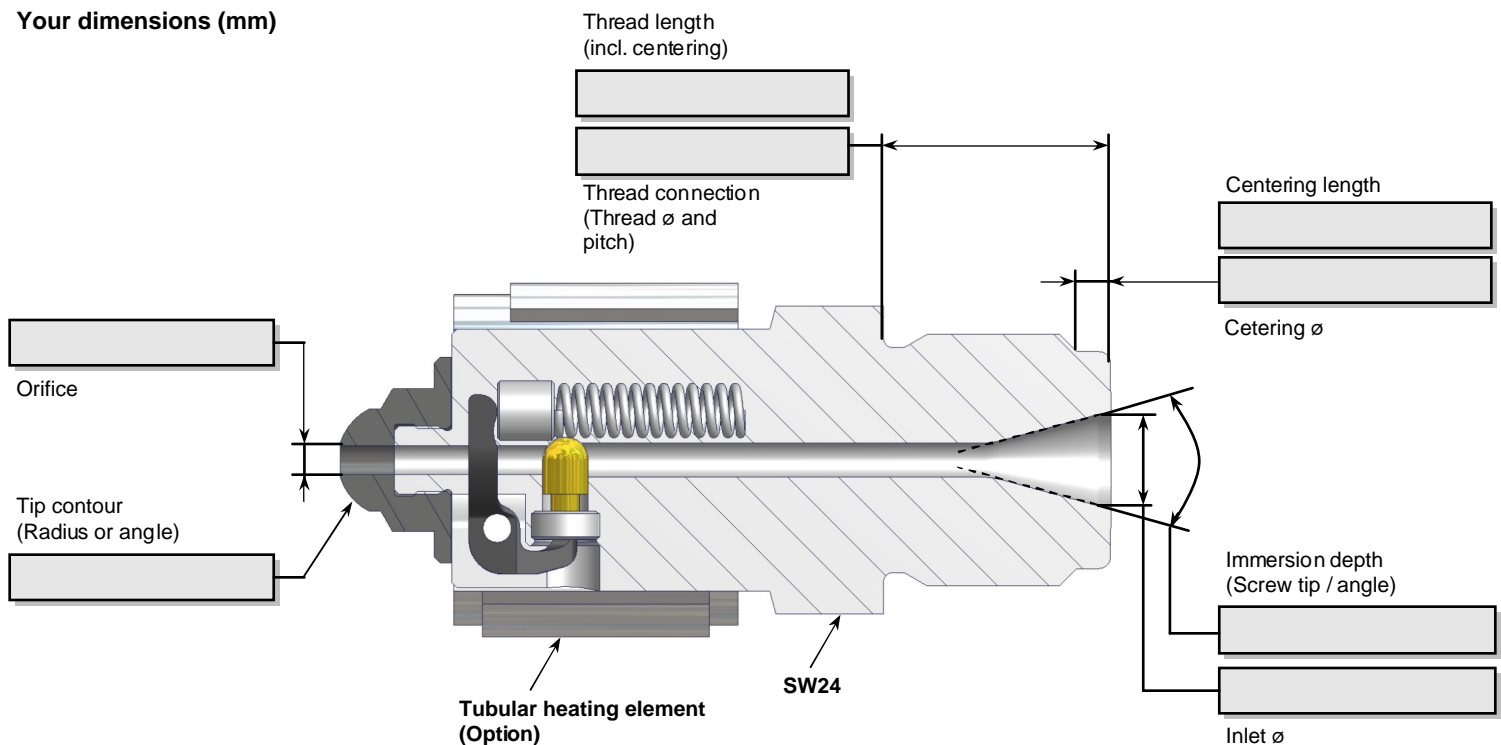
Company:
Street:
City/Zip:
Country:

Contact person:
Tel.:
Fax:
E-Mail:

### Operating data and standard dimensions

max. injection rate cm <sup>3</sup> / s based on Polystyrene (PS)	Volume (cm <sup>3</sup> ) in the nozzle	100	1
approx. screw diameter in mm	up to approx. 20		
contact force	40 kN		
back pressure (opening pressure)	200 bar		
max. injection pressure at temperature	3000 bar at 400°C		
max. orifice (larger bore on request)	3 mm		
nozzle length excluding thread	60 mm		
heater band dimensions (inside ø * max. length)	Ø30 x 30		

### Your dimensions (mm)



Machine type (when known)

### Options

Tubular heating element with integrated thermocouple (FeCuNi)	Yes	<input type="checkbox"/>
Short version without heating possibility	Yes	<input type="checkbox"/>

**Customer information:** We need additional information for requirements, which vary from our standard range e.g. drawing sample. Our customer services will be pleased to help you.